

1. Sinfonie
(1986)

Friedrich Radermacher

Allegro
♩ = 120

7

12

15

21

28

36

43

48

53

f *f* *f* *f* *f*

p

ff *rit.*

a tempo

p *fp*

mf

mf *p*

mf cresc. *mf*

poco rit. *A tempo*

p espr. *p*

60 **3** a2 *p*

67 **4** *ff*

76 *b* a2

81 **B** **4** 1. *p*

89 *p*

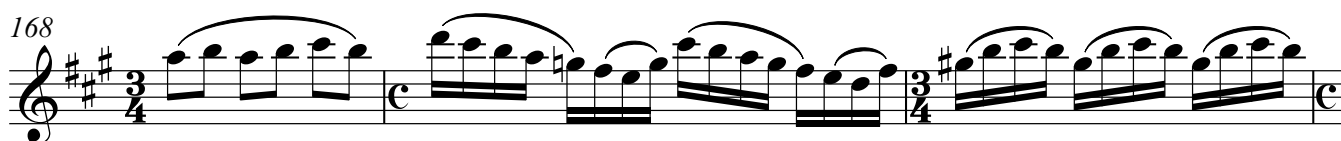
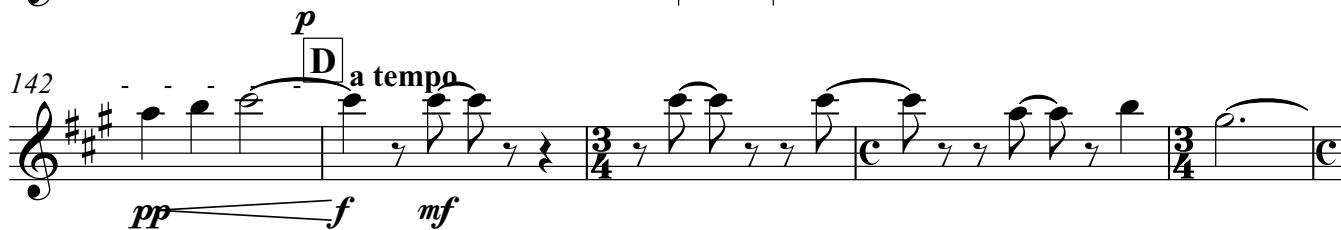
95 *mf*

101 a2 *pp*

107 *p*

112 *ff* *pp espr.*

118 *p*



257

mf

264

H

pp

272

p *mf*

280

a2

p

289

f *pp*

298

rit. **I** Tempo 1

mf

306

1. solo

mf

313

pp

321

poco rit. a tempo

p

331

pp

339

mf

345

p *pp*

3. Satz

Allegro moderato

♩ = 138

p *p* *f* *f* *mf* *f* *pp*

44 *ff*

48 **K** *p* *mf* *f*

55 *p*

60 *ff* *f*

64 *sfz* *sfz*

68 *pp*

71 *ff*

75 **L** *p espr*

81 *fp* *p*

91 *4*

98 1. *p*

103 2 *mf*

110 **M** 5 1. *p* 5 *p*

123 *f*

128 3 1. *p* *f*

135 *fp* *pp*

142 **N** 2 *p* 3 *p*

149 1. *p* 3

155 *p* *f* 3 3 3

161 *p* *ff*

166 *f* *sfz*

171 *sfz* *pp*

175 *ff* *ff* *rit.*

4. Satz

Adagio
♩ = 72

pp

187 *p* 6

199 *rit.* *a tempo* 2 *pp*

207 2 2 *pp* *p*

216 *p*

222 7 *p*

233 *rit.* *pp* *pp*

239 *ppp perdendosi*

5. Satz

Allegro con brio
♩ = 140

1. *f* *mf*

7 *a2*

12 *f*

16 *2* *p*

23 *pp*

29 *O* 1. solo *p espr*

35

39

44 *p*

48 *f*

52 **P** 6

63 *f*

68

71 3 *ff* 2

79 *p*

84 **Q** 5 *mf* *f*

94 *p* *f*

98 7 **R** 5 *p*

111 1. *p* *mf* *sfz* *ff*

116

122 *p* *p*

128 **S** 5 1. *p*

137

141 1. *p* *f*

147 *mf* *f*

152 *f*

157 **T** 3 1. *ff* 2

165 1. 2

